

AMAGER BIO



Welcome to Amager Bio, a former cinema. And since 1997 a 1300 capacity venue in Copenhagen with a wide performance area and warm wooden floor to embrace many types of concerts and events.

On the following pages you will find the info you need to get the advance started.

| | |
|------------|--------------------------------|
| Page 2: | Venue info |
| Page 3: | Driving instructions & parking |
| Page 4: | General venue specifications |
| Page 5-6: | Dressing rooms |
| Page 7: | Map / Amager Bio from above |
| Page 8: | Sound |
| Page 9-10: | Patch plan for lights |

VENUE INFO

| | |
|--------------------|--|
| Adress | AMAGER BIO Øresundsvej 6, 2300 Copenhagen S |
| Load in address | Strickersvej 7, 2300 Copenhagen S (behind venue) |
| WEB | http://www.amagerbio.dk |
| Phone | +45 32 86 08 80 |
| Capacity | 1300 standing: 1000 on floor // 300 on balcony 705 seated: 577 on floor // 128 on balcony (including guestlist) |
| Timings | On show day the production can last a maximum of 10 hours from load in. Additional hours are settled according to the contract. |
| Curfew | Stage curfew is 23:00. Dressing rooms and showers will be closed 1 hour after show end and all vehicles have to leave immediately. |
| Venue promoter | Per Abildtrup per@amagerbio.dk |
| Venue rental | Kim Alex Grøndahl kim@amagerbio.dk |
| Production manager | Signe Andersen signe@amagerbio.dk |
| Technical manager | Kim Khan khan@elektrometer.dk |

DRIVING INSTRUCTIONS & PARKING

Go to:

Strickersvej 7, 2300 Copenhagen S / 55°39'27.3"N 12°36'34.9"E

Facilities:

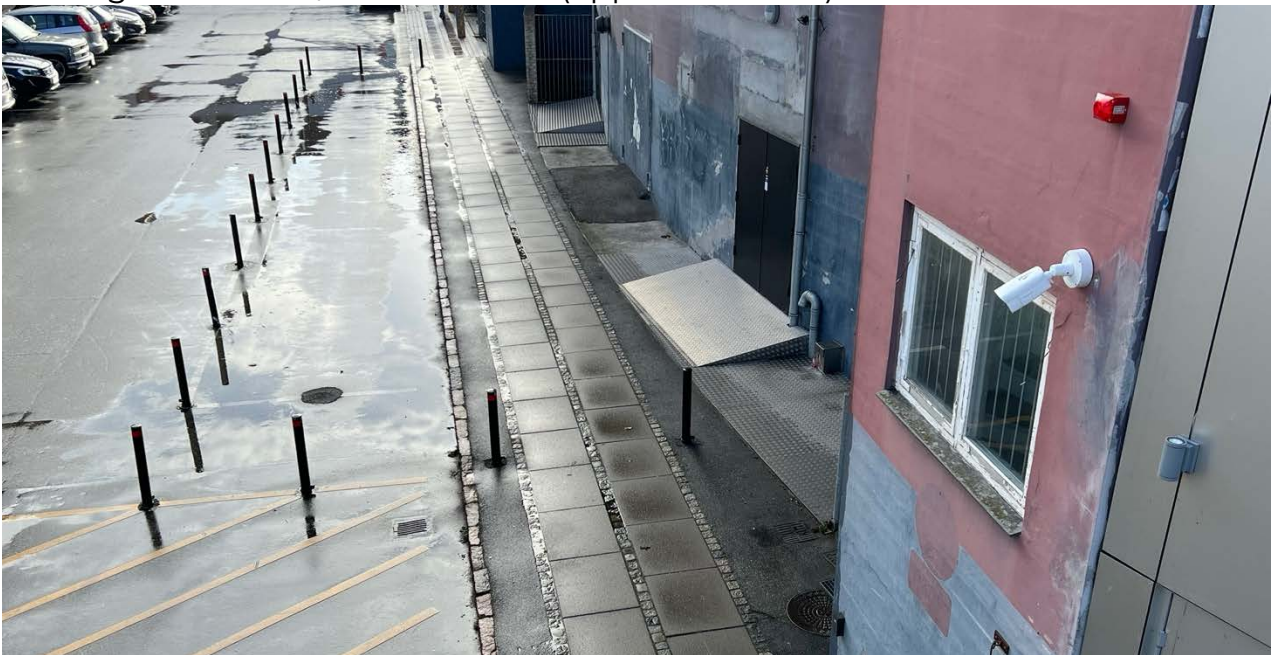
24 mtrs locked parking. Shore power: 16A / 32A /

Restrictions:

According to Danish law, idling is not allowed for longer than 1 minute. All engines must then be switched off completely. Diesel heaters during parking are not permitted, Power will be provided.

To park overnight, before or after the show, is absolutely NOT an option. All parking must be agreed in advance as the parking lot is a closed area. Parking is possible from 09:00 and until 30 minutes after loadout. Please pay attention to the times as they're strict with no exceptions.

Parking and load-in/out directions (approx. 35 mtrs.)



GENERAL VENUE SPECIFICATIONS

| | |
|------------------|--|
| Stage size | W: 16 m x D: 6 m x H: 1,1 m incl. wings |
| Performance area | W: 12 m x D: 6 m x H: 1,1 m |
| Clearance | 5,5 m |
| Storage | Limited storage. Dead cases may have to go back on truck. |
| Power for sound | 1 x 63 amp (3 phase) |
| Power for light | 2 x 63 amp (or 1x 125A) for guest power. (3 phase) |
| MON | At SL. Openers usually mixes MON from FOH |
| FOH | 13 mtrs. from front of stage – out of center (HL) |
| Rigging | Rigging not possible. Lights can bring in floor-production only |
| Backdrop | Motorised backdroppipe (max size: 5x12meters/130 kg) |
| FX | Pyro, confetti and open flames are prohibited in Amager Bio including candles, incense etc. Use of blood or similar theatrical effects is prohibited. |
| dB(A) limits | 101 dB(A) LEQ15. Will be measured from FOH (10EaZy) |
| Cat & DMX | Guest lines are available for both light and sound within reason |
| Merchandise | In foyer. Well lit area of 10 m ² (2,5 x 4m) floorspace with a total length of 3,6 m. table and 1 power outlet. Artist sells. |
| Smoking | According to Danish law it is forbidden to smoke anywhere inside Amager Bio incl. electronic cigarettes. if the fire alarm is triggered by smoking, the evacuation starts automatically, and this entails an artist cost of 8000 dkkr. |
| WL + DJ | Note that we do not have WL mics nor DJM and turntables inhouse. |
| Load out | Load out takes place through merchandise area, this means that merchandise sales must stop before loading the truck. |
| Show Stop/Break | Venue managers have exclusive right to break or stop the show in case of danger, or to avoid accidents. |
| Laser | If laser is a part of the show, we must be advised in advance. |
| Barriers: | Mojo type (rental) |
| Internet | Wifi Password will be given upon arrival, wired internet is available. |

DRESSINGROOMS

Ground level, right behind stage: Dressingroom 1 + 2
Two (2) smaller rooms with couches, a few chairs, fridge and mirror suitable for about 5-6 ppl. each and separated by 2 showers and 1 toilet

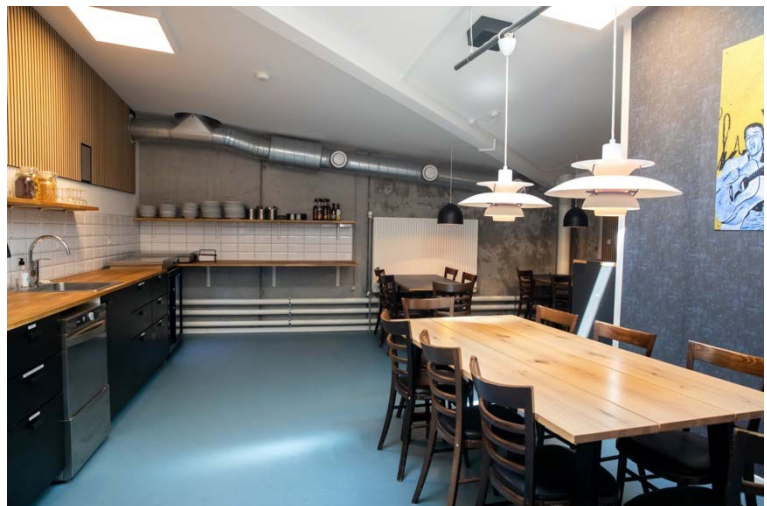


1st floor

Main backstage area with:

Catering kitchen.

Suitable for 18 ppl. seated, oven, fridge, plates, cutlery etc.



Tour production.

Suitable for 4-5 seated ppl.,
worktable, two soft chairs and
fridge.



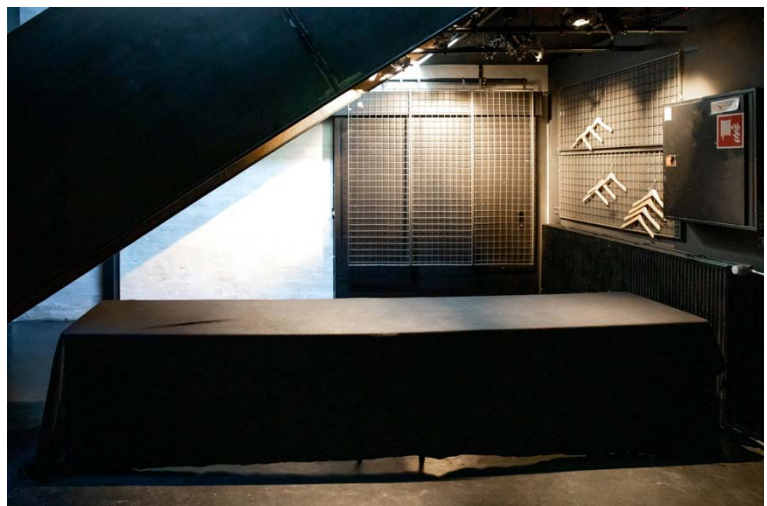
Main backstage. Dressingroom 3

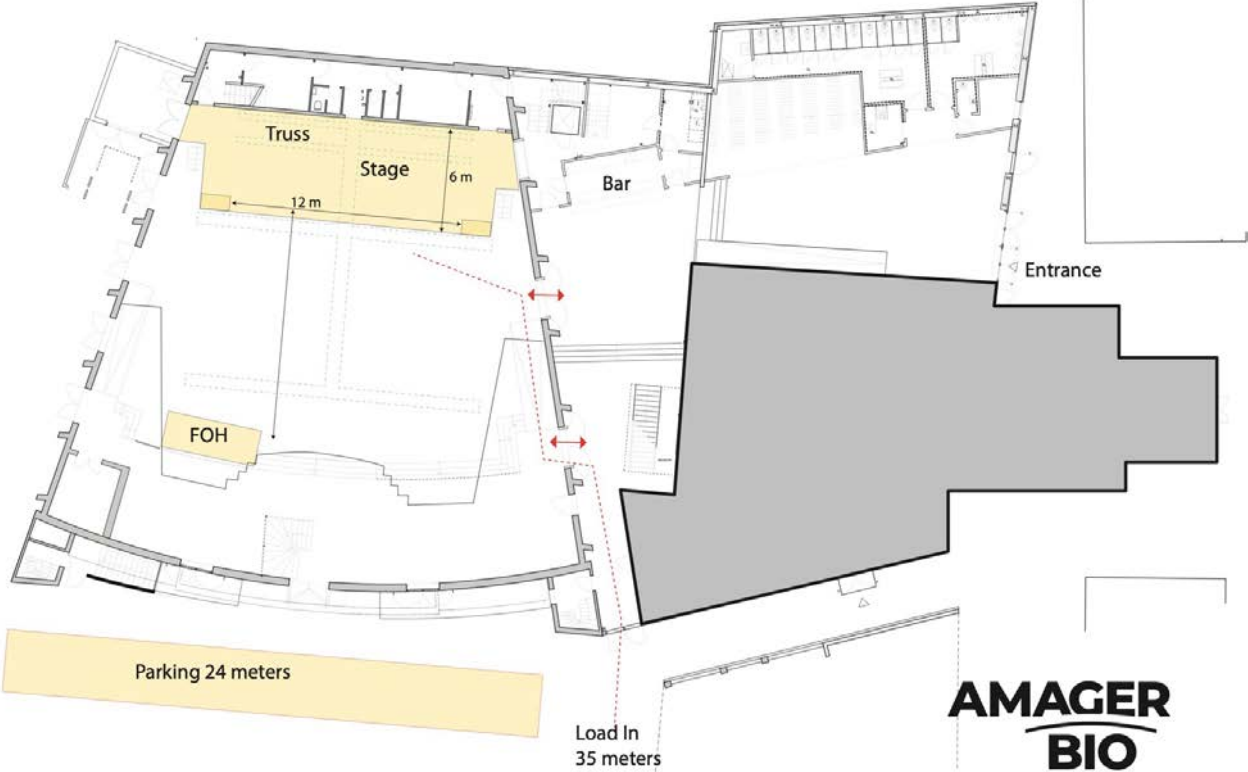
Suitable for up to 10 ppl. with 2
couches, table w. 4 chairs, table
with 2 mirrors, fridge, 1 toilet, 1
shower.



Merchandise.

In foyer. Well lit area of 10 m²
(2,5 x 4m) floor space with a
total length of 3,6 m. table and 1
power outlet. Artist sells.





TECHNICAL SPECIFICATIONS / SOUND/LIGHT

| | |
|--------------------|--|
| FOH | <ul style="list-style-type: none"> 01 x Midas HD96-24. 72 in / 24 out + local I/O 06 x L-acoustics KUDO on each side (hanging) 03 x L-acoustics SB28 SUBs on each side (Small end-fire) 07 x L-acoustics LA8 04 x L-acoustics 115xt frontfills 08 x L-acoustics 5xt under balcony 04 x L-acoustic 5xt / Lipfills on request for non-rock n roll shows |
| FX | <ul style="list-style-type: none"> 01 x Bricasti M7 01 x TC 2290 delay |
| Monitors | <ul style="list-style-type: none"> 01 x Midas HD96-24. 72 in / 24 out + Local I/O 14 x L-acoustics X15 05x L-acoustics LA12X - total of 10 mixes incl cue 01 x RCF 18" selfpowered drumsub 1000w 01x Sidefill L-acoustic 1x ARCS/SB218 pr side. Please advance. |
| Microphones | <ul style="list-style-type: none"> 02 x Shure B 52 02x Audix D6 02 x Shure Beta 91 05 x Shure SM 58 07 x Shure SM 57 03 x Shure Beta 56 05 x Shure Beta 58 04 x Shure SM 81 04 x AKG 535 07 x Sennheiser 604 03 x Sennheiser 521 16 x BSS AR-133 Active DI |
| Lights | <ul style="list-style-type: none"> 01 x AVOLITE Tiger Touch 2 w. wing 01 x Bazehazer pro 12 x Chauvet R3 spot 25 ch mode 12 x Chauvet R2 Wash 17 ch mode 05 x SGM X-5 strobes 4 ch mode 08 x Chauvet Strike Array Blinders 10x Prolights ECL Profile FW 08x Prolights ECL Fresnell 2k TW |
| Screen & projector | <ul style="list-style-type: none"> 01 x Motorized screen – 520 x 425 cm (rental) 01x Panasonic PT-MZ880BEJ Laser 8000 lumens |

PATCH PLAN FOR LIGHTS

| | |
|--------------------------------|--|
| Rear truss / LX1 Universe 2 | 06 x Chauvet R2 wash 17 ch mode: 1, 18, 35, 52, 69, 86 06 x Chauvet R3 spot 25 ch mode: 201, 226, 251, 276, 301, 326 04x Chauvet Strike Array Blinders 1 ch mode: 467, 468, 469, 470 03 x SGM X-5 strobes 4 ch mode: 501, 505, 509 01 x basehazer pro 2 ch mode: 475 |
| Mid truss / LX2 Universe 1 | 06 x Chauvet R2 wash 17 ch mode: 1, 18, 35, 52, 69, 86 06 x Chauvet R3 spot 25 ch mode: 201, 226, 251, 276, 301, 326 04x Chauvet Strike Array Blinders 1 ch mode: 467, 468, 469, 470 02 x SGM X-5 strobes 4 ch mode: 505, 509 |
| Frontlights: LX3 Universe 2 | 08 x Prolights FW ECL Profile UNO mode: 401 - 408 04x Prolights ECL Fresnell 2K TW 5ch mode: 411, 416, 421, 426, |
| Houselights: LX4 Universe 2 | 04x Prolights ECL Fresnell 2K TW 5ch mode: 431, 436, 441, 446 02 x Prolights FW ECL Profile UNO mode: 409, 410 - May be used as bar lights. |

